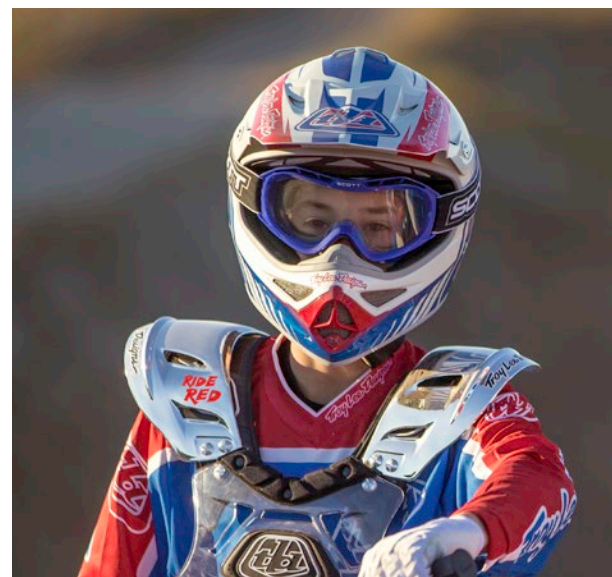




2016 CRF150F

TAKE FUN UP A NOTCH.



THIS IS THE BIKE FOR YOU.

Every once in a while there's a bike that strikes the ideal balance. For many young and smaller adult off-road riders, that bike is going to be Honda's super-fun CRF®150F. Its electric starter takes the kick out of getting underway, but not out of the ride. Its smooth four-stroke engine delivers the power you depend on, while the serious Pro-Link® rear suspension turns the bumps of the trail into the best part of the ride. On a CRF150F, you'll be ready to take your off-road riding to the max.

SPECIFICATIONS

ENGINE: 149cc air-cooled single-cylinder four-stroke

FUEL SYSTEM: 24mm piston-valve carburetor

TRANSMISSION: Five-speed

FRONT SUSPENSION: 35mm leading-axle Showa® fork; 9.1 inches travel

REAR SUSPENSION: Pro-Link Showa single-shock; 8.9 inches travel

FRONT BRAKE: Single 240mm disc

REAR BRAKE: Drum

WHEELBASE: 52.3 inches

SEAT HEIGHT: 32.8 inches

FUEL CAPACITY: 1.9 gallons, including 0.4-gallon reserve

CURB WEIGHT*: 233.9 pounds

*Includes all standard equipment, required fluids and a full tank of fuel.

COLOR



Red

For a full list of specifications go to powersports.honda.com.

FEATURES



FOUR-STROKE ENGINE

The CRF150F's four-stroke engine is small enough for beginning riders, yet packs enough punch to keep experienced adults entertained all day long.



ELECTRIC STARTER

Push-button starting makes getting going easier in all kinds of conditions, while the efficient design adds minimal weight.



KEYED IGNITION

A keyed ignition switch for added security—the switch lets you control who goes riding and when, important if you have younger riders in the house.



CRF150F

ENVIRONMENTAL COMMITMENT At Honda, we believe in performance and leadership. That's why we're taking a leadership position when it comes to the environment, in our products and in all other aspects of our business as well. For more information visit <http://powersports.honda.com/about/environment.aspx>.

BE A RESPONSIBLE RIDER Parents need to consider their youngster's age, size, ability and maturity before allowing them to ride. Designed exclusively for off-road operator-only use. Always wear a helmet, eye protection and protective clothing whenever you ride. Never ride under the influence of drugs or alcohol. Always obtain written permission before riding on private land. Whenever you ride off-road, follow the "Tread Lightly" guidelines, and always keep on established trails in approved riding areas. Use common sense, keep your riding area clean, and respect the rights of others when you ride. Inspect your motorcycle before riding and read your owner's manual. Log on to the HRCAs® website (hrca.honda.com) for information concerning reimbursement through the Honda Rider's Club of America® for Motorcycle Safety Foundation (MSF) rider training. Operating your motorcycle with a modified engine, emission control system, or noise control system may be illegal.

Specifications, programs and availability subject to change without notice. See your Honda Dealer for details on all programs. All specifications in this brochure—including colors, etc.—apply only to models sold and registered in the United States. CRF® Pro-Link®, HRCAs®, and Honda Rider's Club of America® are trademarks of Honda Motor Co., Ltd. Showa® is a registered trademark of Showa Mfg., Inc. ©2015 American Honda Motor Co., Inc.