



2016 **CBR300R**

**LIGHT, NIMBLE, AND
GUARANTEED TO TURN HEADS.**



MORE FUN THAN ANYTHING ELSE IN ITS CLASS.

Honda's CBR®300R delivers a giant dose of performance and fun way out of proportion to its engine size. Even experienced riders can't seem to wipe the smile off their face after a ride on this modestly-sized machine. The single-cylinder engine is light and narrow, and that combined with its low seat height make it easy to put your feet on the ground at stops. A big plus for new riders. And the single-cylinder powerband with its wide torque spread is well-suited for both in-town or freeway rides. The light weight makes it responsive on twisty roads. It even comes with ABS as an option. And on top of everything else, it offers excellent fuel efficiency too.

SPECIFICATIONS

ENGINE TYPE: 286cc liquid-cooled single-cylinder four-stroke

FUEL SYSTEM: PGM-Fi, 38mm throttle body

TRANSMISSION: Six-speed

FRONT SUSPENSION: 37mm fork; 4.65 inches travel

REAR SUSPENSION: Pro-Link® single shock with five positions of spring preload adjustability; 4.07 inches of travel

BRAKES: Front: Single 296mm disc / Rear: Single 220mm disc
Front: Single 296mm disc with ABS / Rear: Single 220mm disc with ABS

WHEELBASE: 54.3 inches

SEAT HEIGHT: 30.7 inches

FUEL CAPACITY: 3.4 gallons

CURBWEIGHT*: 357 pounds / 364 pounds ABS

MILEAGE ESTIMATE:** 71 MPG

*Includes all standard equipment, required fluids and a full tank of fuel.

** Miles per gallon values are calculated estimates of fuel consumed during laboratory exhaust emissions tests specified by the EPA, not during on road riding. Use for comparison purposes only. Your actual mileage will vary depending on how you ride and maintain your vehicle, weather, road conditions, tire pressure, cargo and accessories, rider and passenger weight, and other factors.

For a full list of specifications go to powersports.honda.com.

COLORS



Black



Bright Yellow /
Matte Black



Candy Orange /
Matte Black

FEATURES



NARROW SEAT & LOW SEAT HEIGHT

The low seat height helps make sure the CBR300R fits a wide range of riders. It also makes it easier to put your feet down when stopped—a big confidence builder.



SUPERSPORT STYLING

The CBR300R features full-cowl Supersport styling and dual headlights, it also has bold new graphics this year.



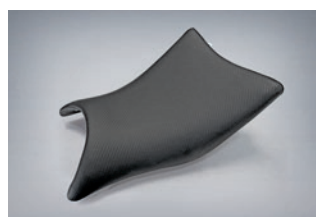
CBR300R ABS

Honda ACCESSORIES



SEAT COWL

Color-matched to your bike, the seat cowl streamlines your CBR300R's rear bodywork.



LOW SEAT

Accessory Seat is more than 1 inch lower than the standard seat for an easier reach to the ground.



For a full list of all the Honda Accessories available for your CBR300R log on to genuineaccessories.honda.com

ENVIRONMENTAL COMMITMENT At Honda, we believe in performance and leadership. That's why we're taking a leadership position when it comes to the environment, in our products and in all other aspects of our business as well. For more information visit <http://powersports.honda.com/about/environment.aspx>.

BE A RESPONSIBLE RIDER Remember, always wear a helmet, eye protection and protective clothing whenever you ride. Never ride under the influence of drugs or alcohol and never use the street as a racetrack. Inspect your motorcycle before riding and read your owner's manual. Log on to the Colton Rider Education website (powersports.honda.com/experience/colton.aspx) for information concerning reimbursement through the Honda Riders Club of America® for Motorcycle Safety Foundation (MSF) rider training. Obey the law, use common sense, respect the rights of others when you ride, and make sure you have a proper license when riding on public roads. Operating your motorcycle with a modified engine, emissions control system or noise-control system may be illegal. For more information visit powersports.honda.com.

Specifications, programs and availability subject to change without notice. All specifications in this brochure—including colors, etc.—apply only to models sold and registered in the United States. CBR® Pro-Link® Honda Genuine Accessories™ and Honda Riders Club of America® are trademarks of Honda Motor Co., Ltd. ©2015 American Honda Motor Co., Inc.